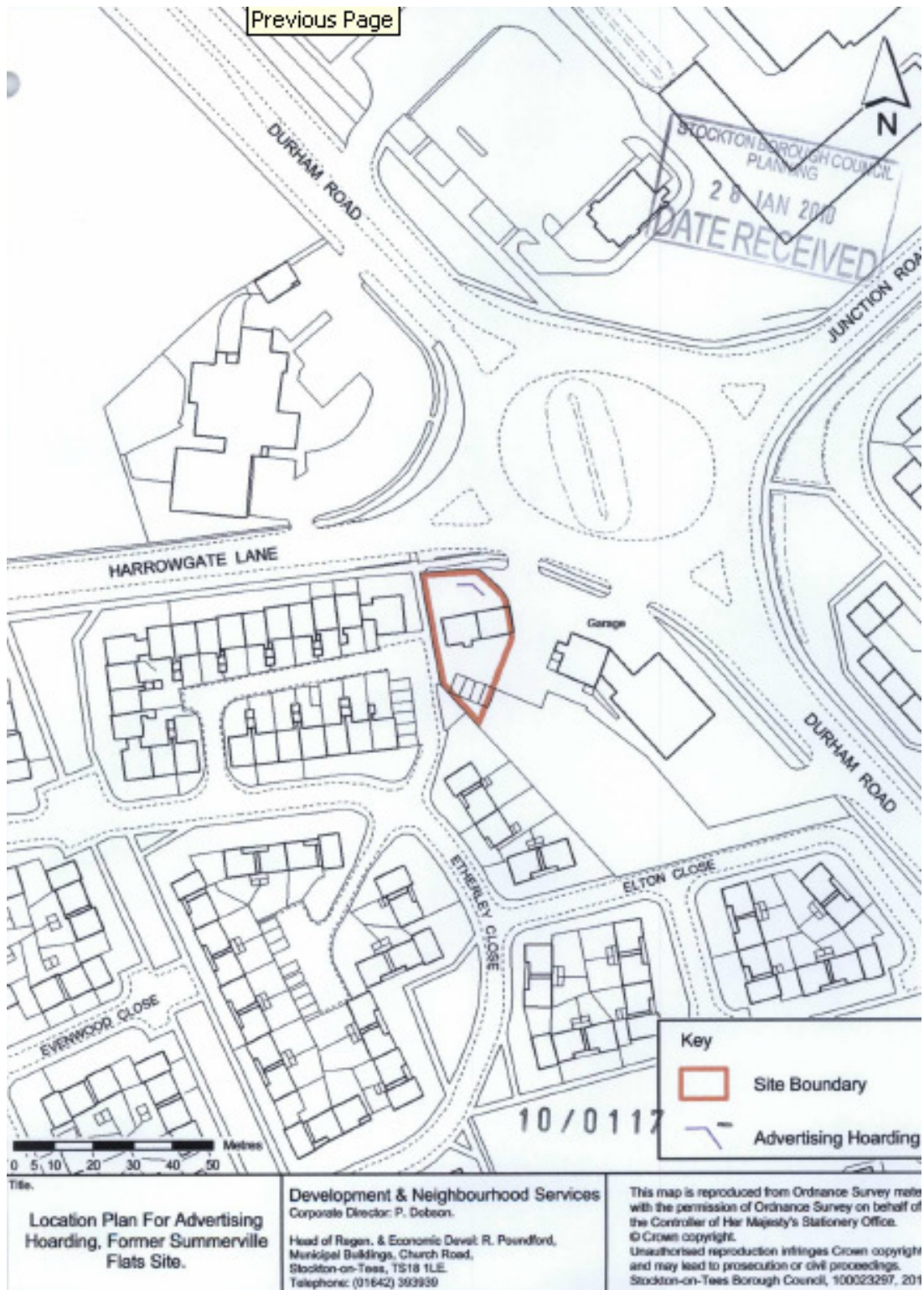
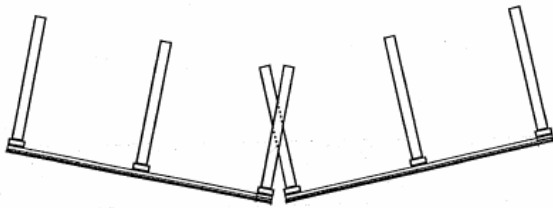


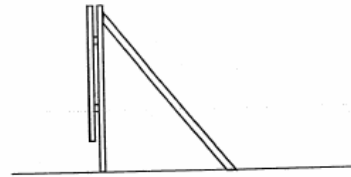
Appendix 1: site location plan showing location of the proposed hoardings



Appendix 2: Proposed hoarding signs

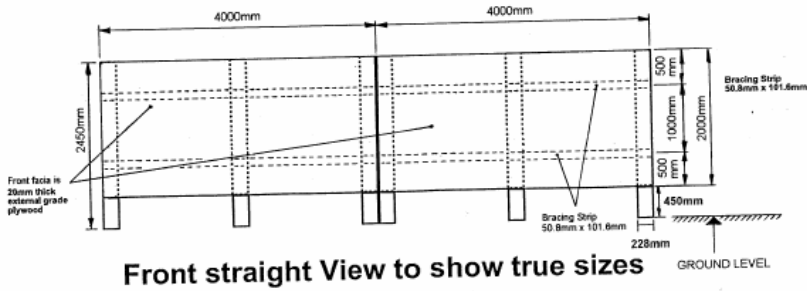


Top View



Side View

STOCKTON BOROUGH COUNCIL
DEPOSITED PLAN
16 FEB 2010
SUPERSEDES PLAN DATED
2nd Feb 2010
HEAD OF PLANNING & ENV.



Front straight View to show true sizes

STOCKTON BOROUGH COUNCIL
16 FEB 2010
DATE RECEIVED

Constructed of a backing board of 20mm external grade plywood fixed across wooden timber posts that are cemented approx 1000mm -1200mm into the ground with square timber supporting struts to back the bottom of the graphic panels is approx 450 mm from ground level

SCALE 1:50

STOCKTON BOROUGH COUNCIL
PLANNING
16 FEB 2010
SCANNED

SEC0002.A

Appendix 3: Proposed signage

HARDWICK GREEN
A New Future
An impressive development of new homes, a new primary school & leisure facilities

FIRST LEFT ALONG HARROWGATE LANE

Tel: 01642 524970 www.stockton.gov.uk/housingregeneration

Passionate about stockton-on-tees

Stockton-on-tees | BARBATT | keepmoat HOMES | Tristar HOMES | ENDEAVOUR | Homes & Communities Agency